

# POTENTIOMETER POL 200

This analog conductive plastic potentiometer has a plastic housing with injected metal thread. The plain bearing is integrated. The angle of rotation is 320° and can be individually adjusted.

Customizations to meet specific requirements are available upon request.

## Advantages

- Adjustable measuring range: 320°
- Long service life
- High resolution, precision and measurement accuracy
- Robust design

## Application examples

- Radio applications
- Joysticks
- Control panels
- Valve control
- Treatment chairs



General data	
Sensor technology	Potentiometric
Type of contact	Wiper
Sensor type	Absolute measuring
Curcuit	As voltage divider
Electrical data	
Measuring range	320°, adjustable
Independent linearity	± 2 %
Resolution	Analog
Resistance range	10 kΩ
Resistance tolerance	± 20 %
Max. wiper current	5 mA in case of malfunction
Wiper load	> 100x Rn
Insulation resistance	10 GΩ at 500 VDC
Dielectric strength	1000 VAC
Supply voltage	5 VDC typ., 3 to 30 VDC possible
Output signal	Analog 0 to 100 % of supply voltage

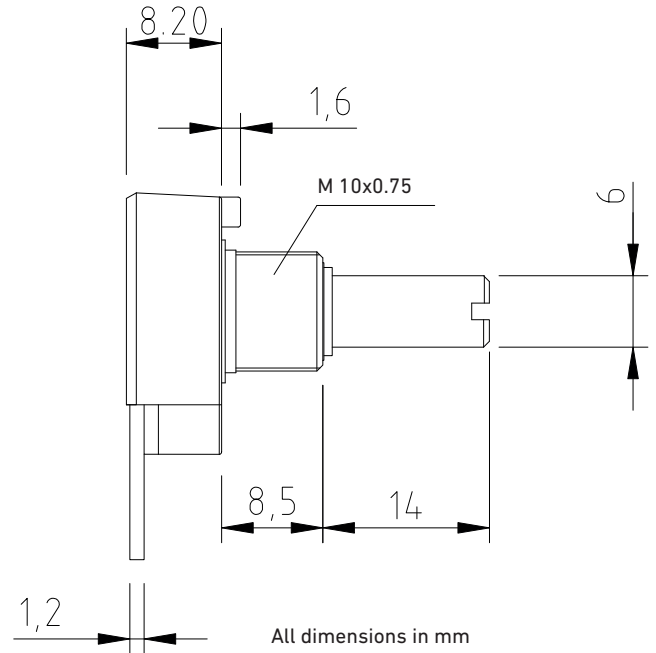
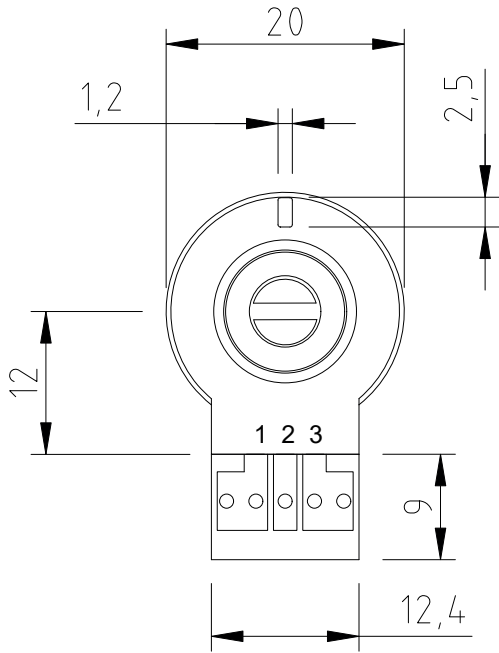
Mechanical data	
Dimensions	See drawings
Shaft	Ø 6 mm
Bearing	Plain bearing
Mounting	Thread M10x0.75
Lifetime	1 million cycles

Environmental data	
Operating temperature	-25 °C to +85 °C
Protection class acc. to IEC 60529	IP 65
EMC	Uncritical
ESD	Uncritical

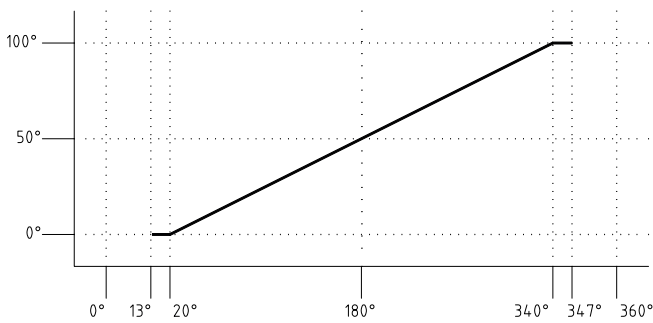
Material	
Housing	Plastic
Resistance material	Conductive plastic
Axis	Nickel-plated brass

Electrical connection	
	Solder pad gilded Cable

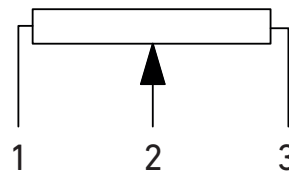
# POTENTIOMETER POL 200



### Output signal standard



### Electrical connection



### Sample order

Article No.	Product name	Measuring range	Electrical connection
E050200374	POL 200	320°	Solder pad

Metallux cannot picture the customer's operating and application conditions and the customer's existing environmental influences. We therefore recommend that you carry out your own investigations into the planned use of the products under the actual operating conditions. We continuously improve our products and also update our data sheets regularly. In this respect, there may be changes in the specification. These changes will apply to orders received by us from the time of the update, unless otherwise agreed. Our products comply with Directive 2011/65/EU (RoHS) including Directive 2015/863/EU and Regulation (EC) No. 1907/2006 (REACH).