

# POTENTIOMETER POL 230

This rotary sensor in conductive plastic is designed for analog measurements. It consists of a robust aluminium housing and a steel axle mounted on two ball bearings and is thereby designed for the highest mechanical loads.

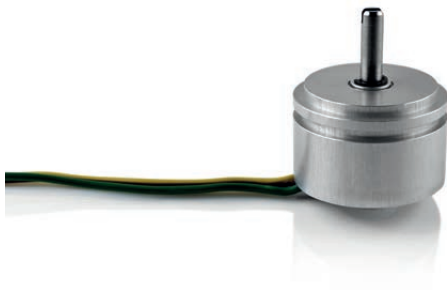
Customizations to meet specific requirements are available upon request.

## Advantages

- Adjustable measuring range: 340°
- Long service life
- High resolution, precision and measurement accuracy
- Ball-bearing shaft

## Application examples

- High-quality measuring systems
- Servo systems
- Drives



General data	
Sensor technology	Potentiometric
Type of contact	Wiper
Sensor type	Absolute measuring
Curcuit	As voltage divider
Electrical data	
Measuring range	340°, adjustable
Independent linearity	± 2 %
Resolution	Analog, near-infinite
Resistance range	5 kΩ
Resistance tolerance	± 20 %
Max. wiper current	5 mA in case of malfunction
Wiper load	> 100x Rn
Insulation resistance	10 GΩ at 500 VDC
Dielectric strength	1000 VAC
Supply voltage	5 VDC typ., 3 to 30 VDC possible
Output signal	Analog 0 to 100 % of supply voltage

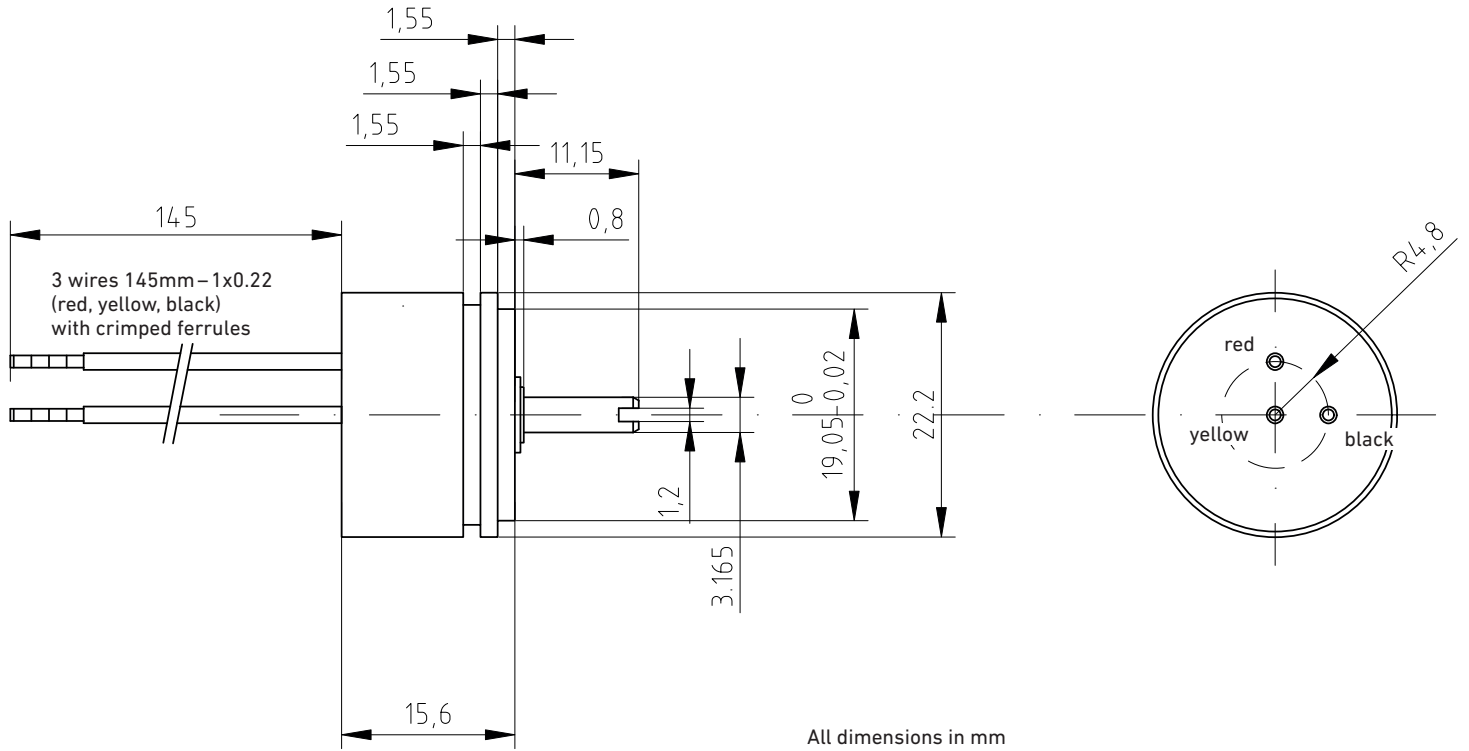
Mechanical data	
Dimensions	See drawings
Bearing	Ball bearing
Shaft	Ø 3.165 mm
Mounting	Servo flange
Lifetime	20 million cycles

Environmental data	
Operating temperature	-25 °C to +85 °C
Protection class acc. to IEC 60529	IP 63
EMC	Uncritical
ESD	Uncritical

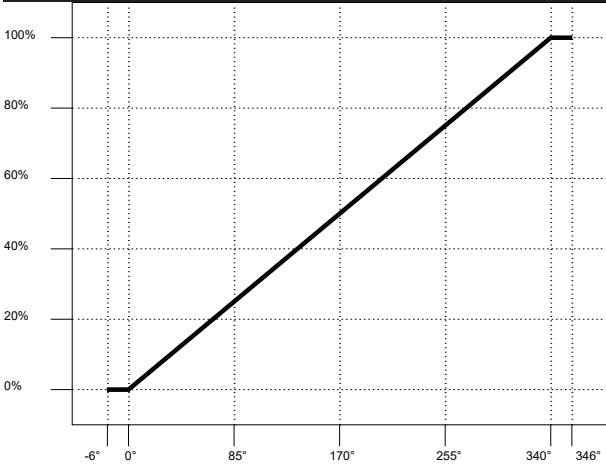
Material	
Housing	Anodised aluminium
Resistance material	Conductive plastic
Shaft	Stainless steel

Electrical connection	
	Cable

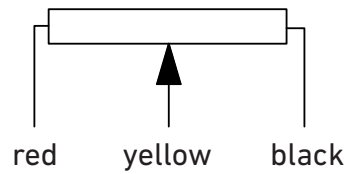
# POTENTIOMETER POL 230



## Output signal standard



## Electrical connection



## Sample order

Article No.	Product name	Measuring range	Electrical connection
H060423003	POL 230	340°	Cable

Metallux cannot picture the customer's operating and application conditions and the customer's existing environmental influences. We therefore recommend that you carry out your own investigations into the planned use of the products under the actual operating conditions. We continuously improve our products and also update our data sheets regularly. In this respect, there may be changes in the specification. These changes will apply to orders received by us from the time of the update, unless otherwise agreed. Our products comply with Directive 2011/65/EU (RoHS) including Directive 2015/863/EU and Regulation (EC) No. 1907/2006 (REACH).